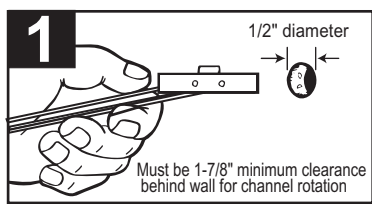


# TOGLER®

## Mounting Instructions

For the 1/4"-20 **BBS™ TOGLER**  
**SNAPTOGGLE®** Anchor

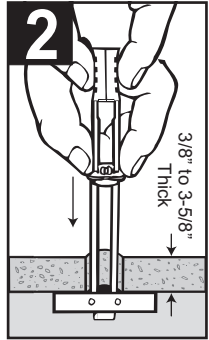


### Step 1 -

Drill 1/2" diameter hole. Hold metal flat along plastic straps & slide channel through hole. See picture #1

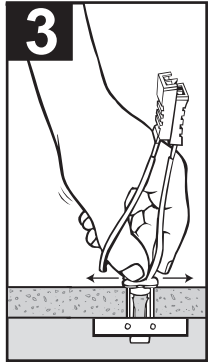
### Step 2 -

Hold ends of straps together between thumb and forefinger. Pull towards you until channel rests behind swim platform or deck. Ratchet plastic cap along straps with other hand until flange of cap is flush with the swim platform or deck. See picture #2



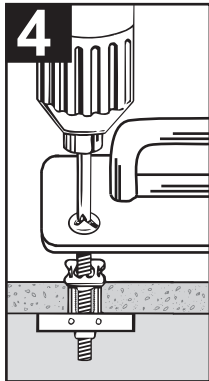
### Step 3 -

Place thumb between straps at swim platform or deck. Push side to side, snapping off straps level with flange. See picture #3



### Step 4 -

Place **Weaver Davit** or **Quick Kit** over flange. Insert bolt and tighten until snug against davits, then stop. See Picture #4. Use the bolts supplied with your **Weaver Davits**, **Quick Kit** or **RBD Kit**. Use the **BBS SNAPTOGGLE** anchors for back two bolts. For the front two use sheet metal screws. For extra strength 3M™ 5200 adhesive can be applied.



For **Weaver Chocks** use 1/4"-20 stainless steel bolts. We recommend use of two **BBS SNAPTOGGLE** anchors mounted on the inside corner holes of the chocks and sheet metal screws in the rest of the holes. Use of 3M™ 5200 adhesive will strengthen the application. Use of **BBS SNAPTOGGLE** anchors on all holes is possible. Be sure to seal all holes with sealant.

Every boat is different. Please call 1-800-367-4062 for any questions.



**Weaver Industries, Inc.** 6570 W. Boekel Rd. Rathdrum, ID 83858  
(800) 367-4062 • (208) 687-3982 • Fax: (208) 687-0782

[www.weaverindustries.com](http://www.weaverindustries.com)

U.S. Patent number 6,161,999 and foreign counterparts thereof and U.S. Patent number 4,650,386. Other patents pending. TOGLER and typeface, logo symbol, and SNAPTOGGLE are registered trademarks of Mechanical Plastics Corp. BBS is a trademark of MPC.